



INAUGURAL
INTERNATIONAL EXTREME ARCHERY FEDERATION
ASHLEY OPEN
2024 TOURNAMENT
August 2-3, 2024
Limited Space

GEM
 CENTER
 ASHLEY, IN

Archery Tag
 "It's A Hit!"

ASHLEY OPEN TOURNAMENT & CONFERENCE

Join us at Archery Tag® headquarter's home arena, the GEM Center™, in Ashley, Indiana on Friday, August 2nd & Saturday August 3rd. Teams of 4-8 players will compete for First, Second and Third place in this inaugural annual tournament. This tournament will be double elimination with seeding by random draw. Space is limited to eight teams. John Jackson, creator of Archery Tag®, will hold a conference on Friday morning demonstrating our line of Archery Tag® and S.A.F.E. Archery® products. Whether you have been playing and/or running Extreme Archery for years or interested in starting up, this event is for you!

TEAM REGISTRATION

Register your team of 4-8 players here: <https://extremearchery.com/event/59>
 Early Player Registration by June 14, 2024 - \$75
 Late Player Registration June 15 - July 8, 2024 - \$100
FINAL REGISTRATION DEADLINE: JULY 8, 2024

Each Player Registration Includes:

- Custom Jersey with Player's Name
- All Equipment Provided
- Lunch Provided (Saturday)
- Free Practice Time
- IEAF Player Stats Displayed at Event and at Extremearchery.com



Other Amenities:

- All Matches are Live Streamed
- Medals Awarded for Top Three Teams
- Custom Masks Awarded to First Place Team Players
- GEM Center Cafe' (available for snacks & drink purchases)
- Hotel Discount (see below)



[Download the IEAF Rule Book Here](#)

CONFERENCE

Come early on Friday for a conference hosted by John Jackson, Global Archery™ CEO and the creator of Archery Tag®. There will demonstrations of our line of Archery Tag® and S.A.F.E. Archery® products. Our exclusive scoring system ScoreRite™ will be explained and demonstrated and will change the way you run Extreme Archery events. A great time to get any questions you have answered!

EVENT SCHEDULE*

FRIDAY, AUGUST 2, 2024

- 10:00am - 12:00pm - Conference
- 12:00pm - 12:30 - Go Over Rules
- 12:30pm - 5:00pm - Practice
- 5:00pm - 5:15pm - Rules Reviewed / Seeding ([download IEAF Rule Book](#))
- 5:15pm - 6:00pm - Dinner Break (food available for purchase)
- 6:00pm - 9:00pm - Games Begin

SATURDAY, AUGUST 3, 2024

- 8:30am - 9:00am - Review Lineup and Rules ([download IEAF Rule Book](#))
- 9:00am - 12:15pm - Games Begin
- 12:15pm - 1:00pm - Lunch Break (provided for players. Guests can purchase)
- 1:00pm - 5:00pm - Games Resume
- 5:00pm - 6:00pm - Dinner Break (food available for purchase)
- 6:00pm - 7:00pm - Games Resume
- 7:00pm - 8:00pm - Final Match / Awards

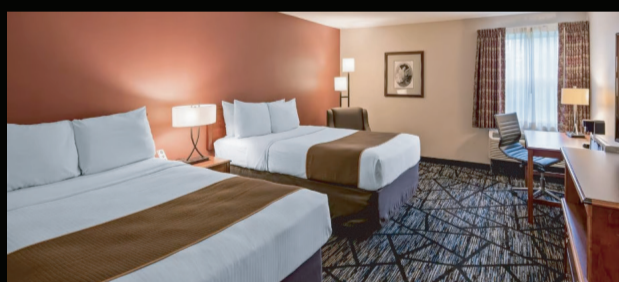
*Schedule subject to change

HOTELS



We have made special arrangements with Sure Stay Plus by Best Western in Auburn, Indiana (only 12 miles south of the GEM Center) for rooms at a discounted rate.
 Aug 2nd & 3rd - Rooms only \$88 (plus tax) per night (reg. \$110)

- Double Queen Beds
- Refrigerator
- Microwave
- Free Hot Breakfast
- 24 Hour Exercise Facility
- Free Parking
- Outdoor Pool

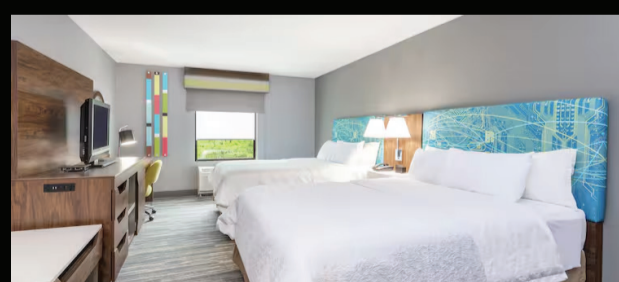


Group Name: "Archery Tag" Call: 260-925-6363
 Explore the hotel at:
www.bestwestern.com/en_US/book/hotels-in-auburn



We have made special arrangements with Hampton Inn by Hilton in Auburn, Indiana (only 12 miles south of the GEM Center) for rooms at a discounted rate.
 Aug 2nd & 3rd - Rooms only \$109 (plus tax) per night (reg. \$129)

- Double Queen Beds
- Free Hot Breakfast
- Fitness Center
- Free Parking
- Indoor Pool

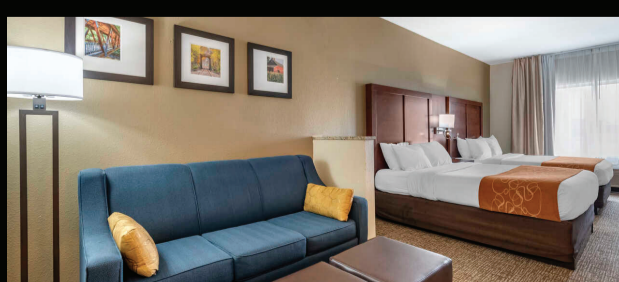


Group Name: "Archery Tag" Hilton Site Group Code: ART
 Booking Link: www.hilton.com/en/book/reservation



We have made special arrangements with Comfort Suites in Auburn, Indiana (only 12 miles south of the GEM Center) for rooms at a discounted rate.
 Aug 2nd & 3rd - Rooms only \$109 (plus tax) per night (reg. \$129)

- Double Queen Beds
- Refrigerator
- Microwave
- Free Hot Breakfast
- Fitness Center
- Free Parking
- Indoor Pool



Group Name: "Archery Tag" Call: 260-920-7601
 Booking Link: www.choicehotels.com/indiana/auburn/comfort-suites-hotels/in124



101 Archery Way • Ashley, IN 46705
 260.587.4500



GlobalArchery.com • ArcheryTag.com • ExtremeArchery.com • GemCenterAshley.com